

Condair Esco

Mounting Instruction, supplement to Condair Esco Technical Documentation

Examples for installing the Condair Esco Steam Humidifier DL40 with one steam distribution pipe

1.
Affix installation template DL40 for steam connection units 10 or 20 at the desired height on the unit/duct and cut out openings.

pictures 1+2

2.
From **inside** the duct, insert the steam distribution pipe through the prepared openings.

pictures 3–6

3.
For insulated units/ducts (example), use the installation set for insulated ducts:

picture 7

Cut the sleeves to correspond with the insulation thickness and insert them through the prepared openings into the unit/duct.

picture 8

Insert the bolts and washers through the sleeves from inside the duct and tighten the nuts.

4.
Attach the steam connection unit and insert the pipe into the flange all the way **to the limit stop** (2 people).

pictures 9+10

To improve sliding, moisten the part to be inserted with **silicon** oil. Secure the steam connection unit so that it is **flush** with the unit/duct,

pictures 11+12

and tighten the set screws on the flange only until they **contact** the pipe.

5.
Align the steam pipe **horizontally** and mount it to the duct with the positioning screw.

pictures 13+14

6.
Install the steam and condensate connections.

picture 15

7.
Use **silicon** to **seal** the installation openings around the steam pipes on the inside of the unit/duct.

DL40 dual pipe (with double coupling)

1.
Affix 2 installation templates for Condair Esco 10, DL40 to the unit/duct, taking into account the axial distance (300, 600 or 900 mm), and cut out openings.

pictures 16+17

Note: Only drill the **top** 2 holes of each template for attachment of the double coupling!

2.
Secure the double coupling to the unit/duct.

pictures 18+19

3.
From **inside** the duct, insert the steam distribution pipes through the prepared openings into the coupling sleeves all the way **to the limit stop**. To improve sliding, moisten the part to be inserted with **silicon** oil. Tighten the lateral set screws on the coupling sleeves only until they **contact** the pipe.

4.
Align the steam pipes **horizontally** and attach them to the duct with the positioning screw.

picture 20

5.
Secure the steam connection unit to the double coupling and tighten the lateral set screws on the connecting flange.

picture 21

To improve sliding, moisten the part to be inserted with **silicon** oil.

6.
Install the steam and condensate connections.

7.
Use **silicon** to **seal** the installation openings around the steam pipes on the inside of the unit/duct.

Condair Esco Type DR73 - A

1.
Affix installation template DR73 for steam connection units 10, 20, or 30 to the unit/duct in accordance with **custom made drawing**, and cut out openings. (Inside distance from duct floor to the centre of the main distribution pipe is:

Steam connection unit 10	= 160 mm
Steam connection unit 20	= 170 mm
Steam connection unit 30	= 170 mm

2.
From **inside** the duct, insert the main distribution pipe through the prepared openings.

picture 22

3/4.
Install the steam connection unit in accordance with item (3) + 4 for DL40 with one steam pipe.

5.
Align the main distribution pipe **horizontally** and mount support bracket to the duct floor.

picture 23

6.
Insert the vertical pipes into the collector sleeves to the limit stop, and align them in such a way that the steam nozzles are arranged 90° to the air flow. To improve sliding, moisten the part to be inserted with **silicon** oil. Tighten the set screws on the main distributor sleeves only until they contact the pipe.

picture 24

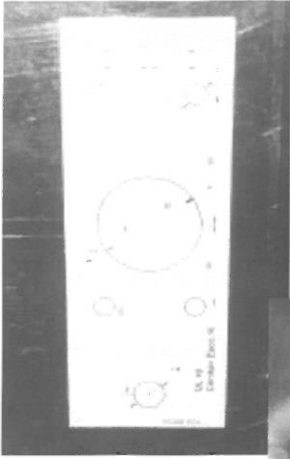
7.
If the length of the vertical pipes exceeds 100 cm, they must be stabilised by attaching them to the unit/duct ceiling.

picture 25

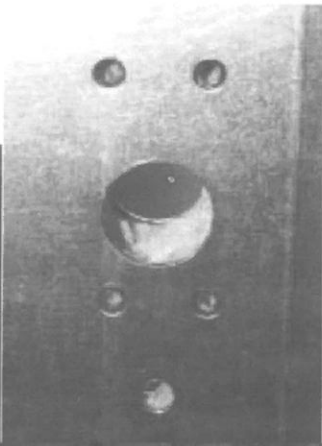
8.
Install the steam and condensate connections

9.
Use **silicon** to **seal** the installation openings around the steam pipes on the inside of the unit/duct

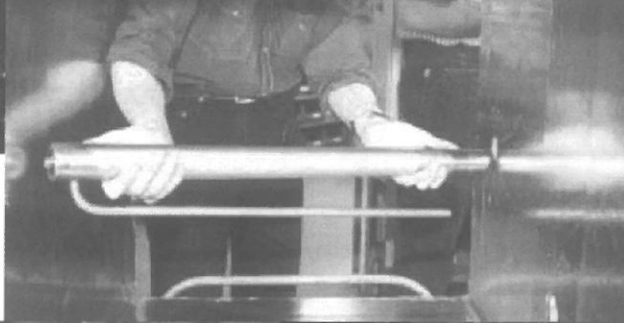
1



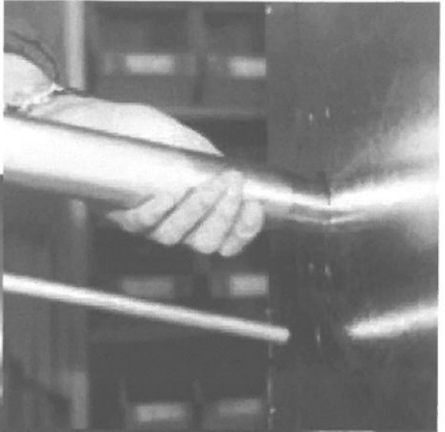
2



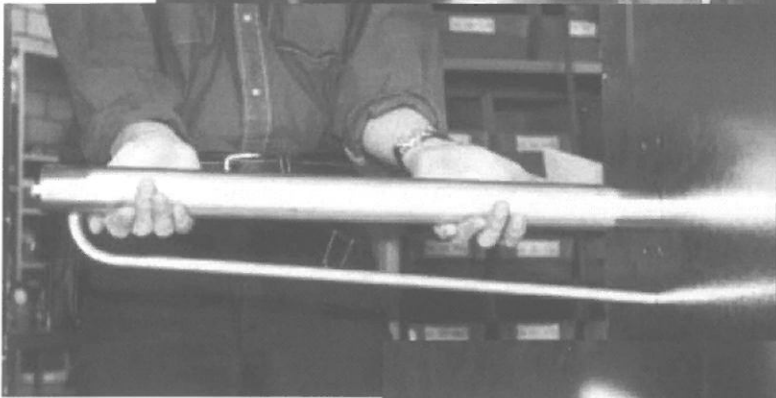
3



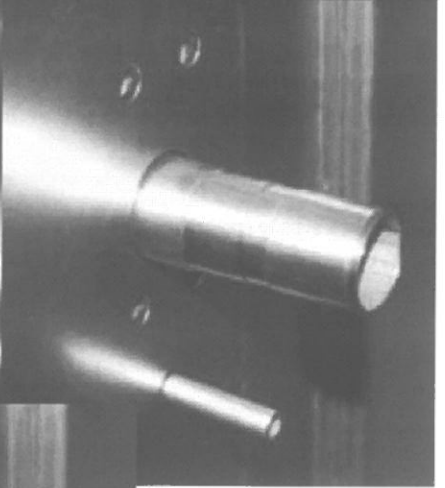
4



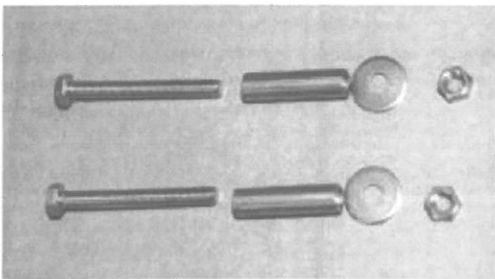
5



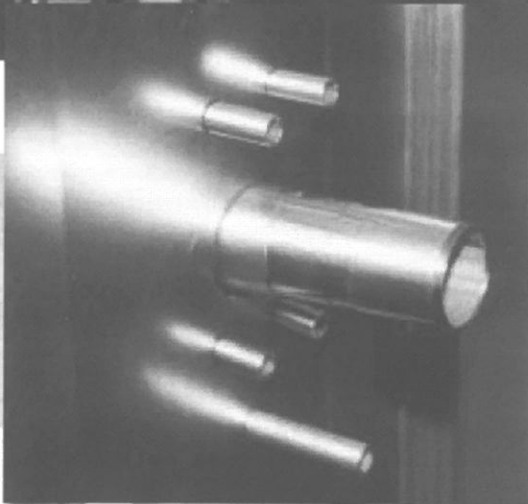
6



7



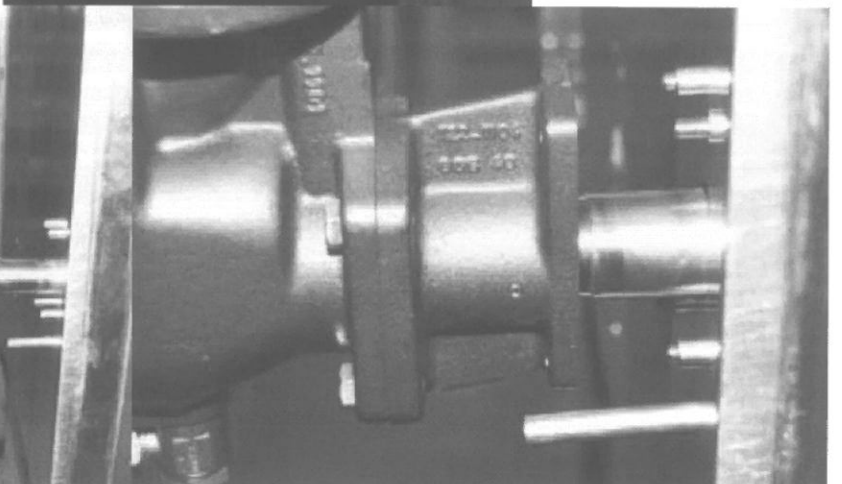
8

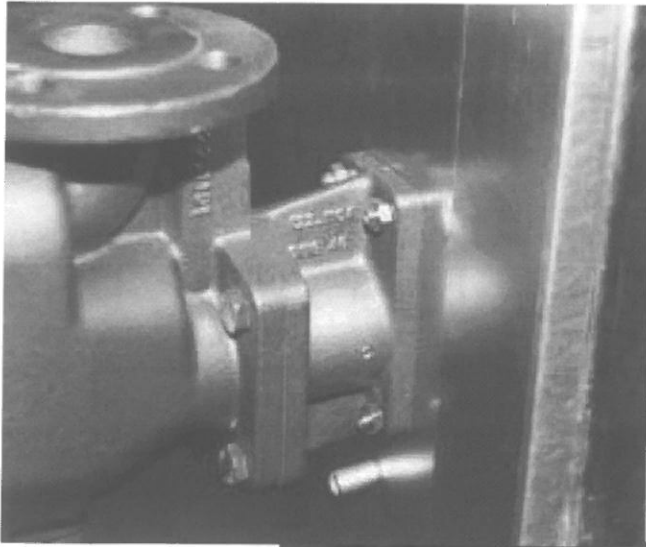


9

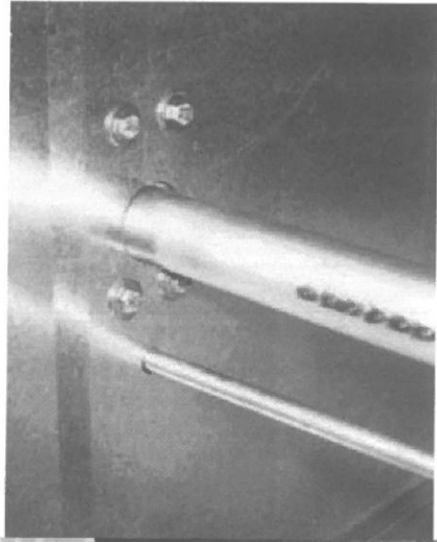


10



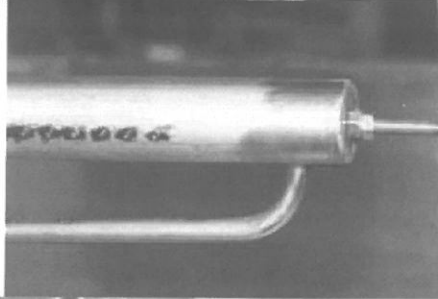


11

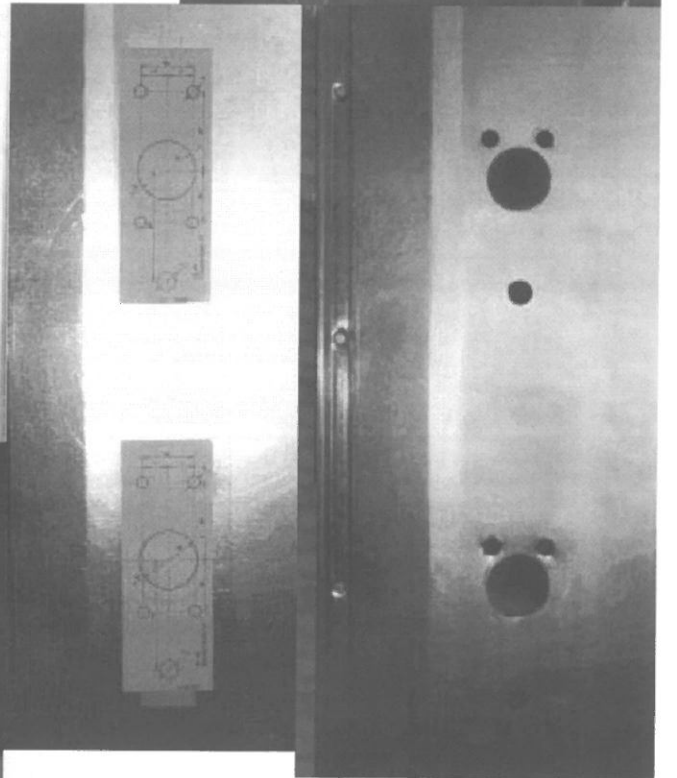
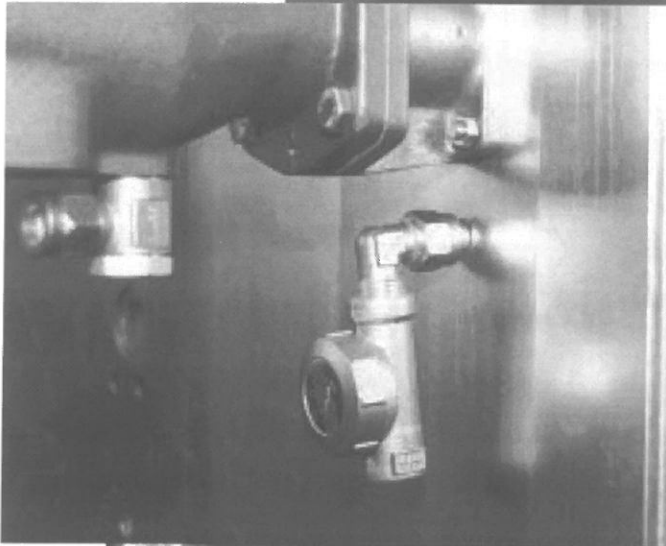
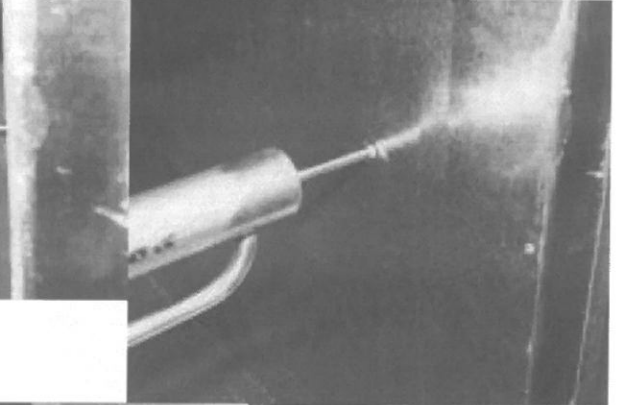


12

13



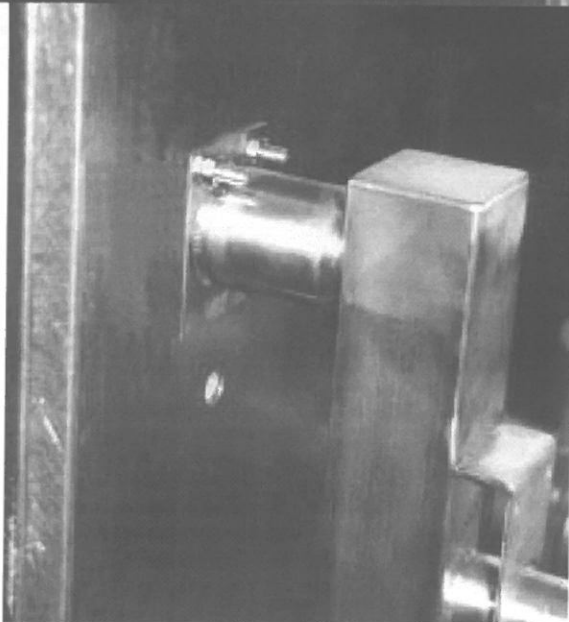
15



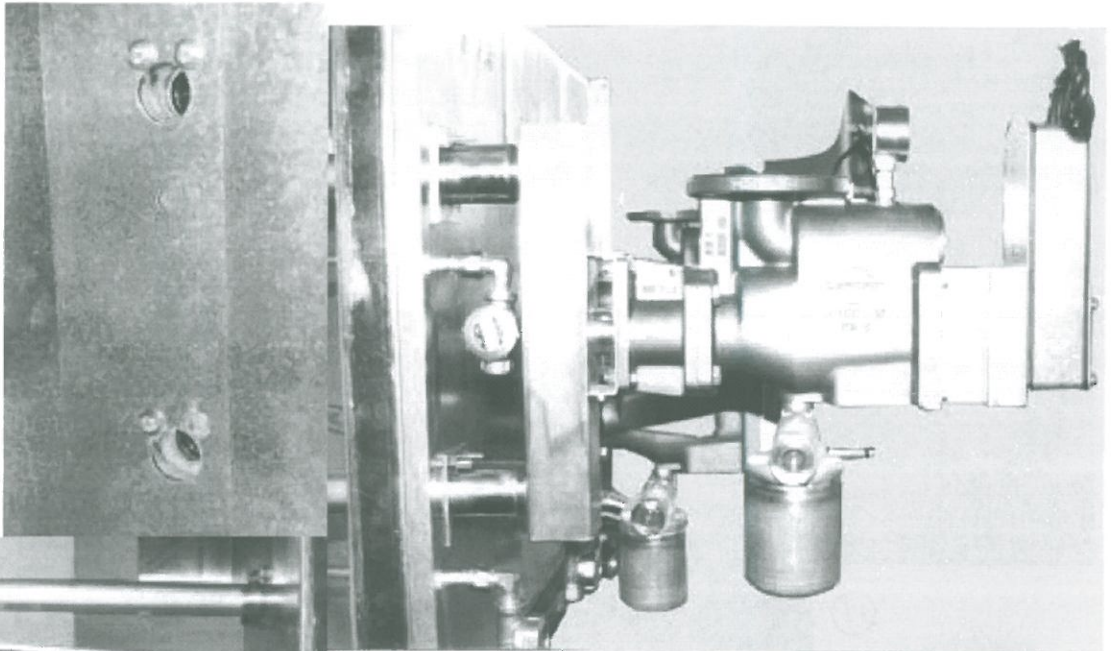
16

17

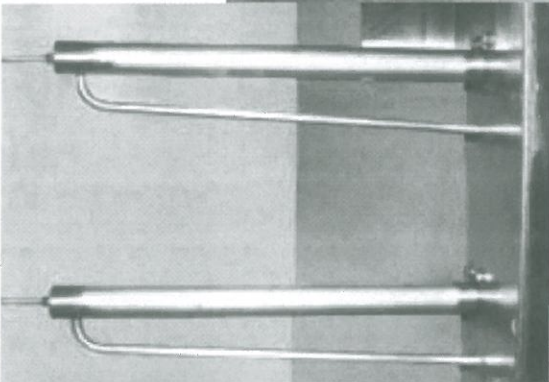
18



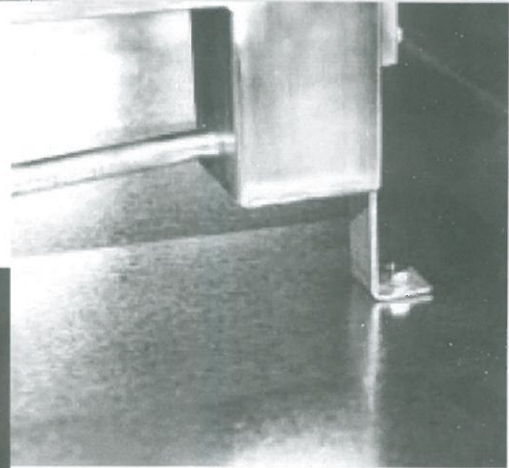
19



20



22



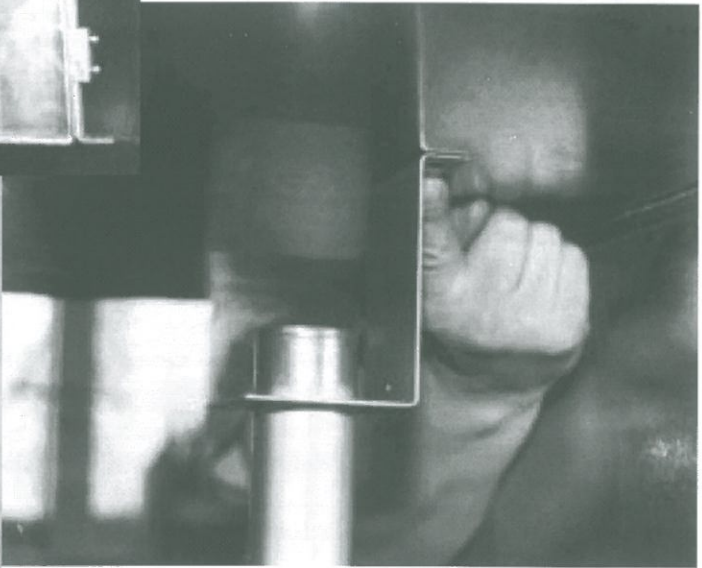
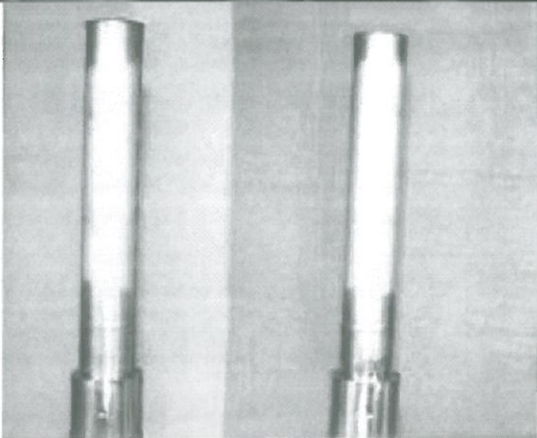
21

23



25

24



Manufacturer:
Walter Meier (Climante International) Ltd
CH-8808 Pfäffikon (Switzerland), Talstr. 35-37, P.O. Box
Tel. +41 55 416 61 11, Fax +41 55 416 62 62
<http://www.waltermeier.com>
international.climate@waltermeier.com

